



1028 Terracotta Drive

\$1,041,491

1 Elevations Available

BEDROOMS: 4

BATHS: 3 full, 1 half

SQFT: 2,671

COMMUNITY: The Settlement at Ashley Hall

FLOOR PLAN: Fishburne H2

MLS: 24006648

Now is the perfect time to make your dream home a reality. We are offering a \$20,000 buyer incentive on this single-family home when you work with our preferred lender.

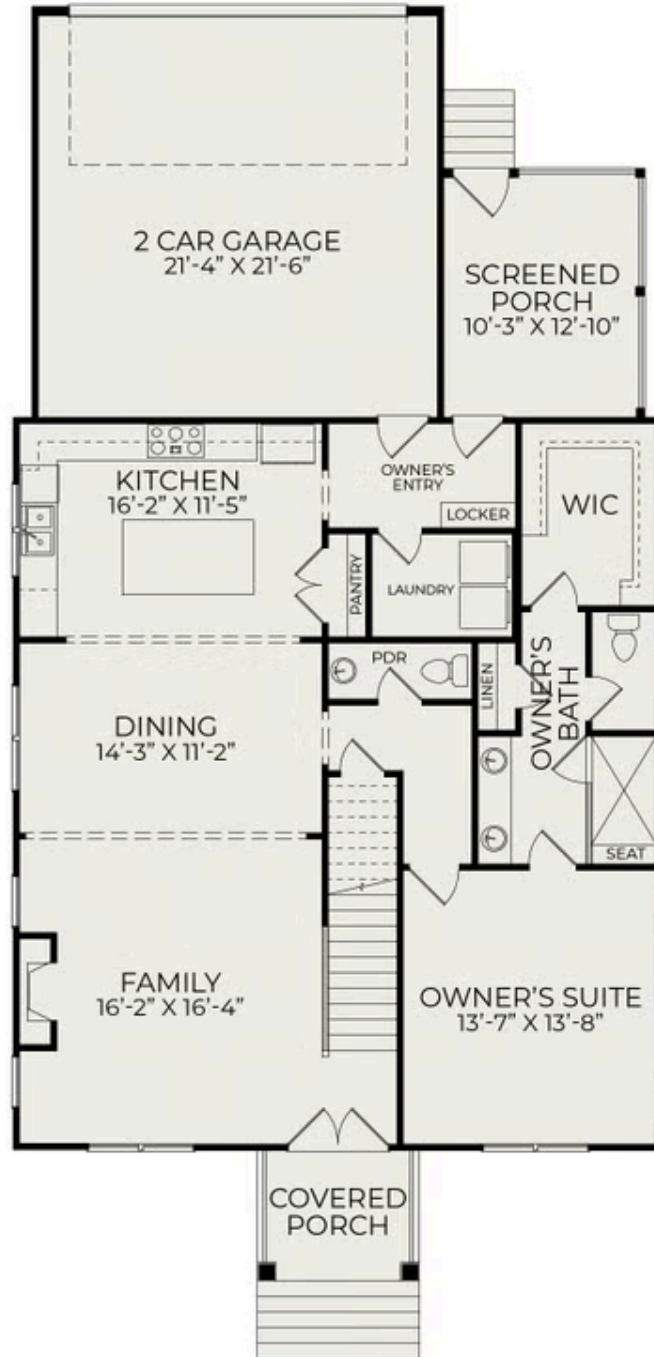
Take advantage of this limited time offer and enjoy the luxury, quality, and craftsmanship that Homes by Dickerson is known for. Terms and conditions apply. Contact us today to learn more!

Discover the allure of The Fishburne, a residence offering four bedrooms and three-and-a-half baths, providing both versatility and functionality. The owner's suite beckons with a tiled shower and a generously-sized walk-in closet, creating a retreat within your own home. Boasting remarkable spaciousness, the open-concept first floor is thoughtfully designed for entertaining and seamless



Exterior Rendering

First Floor



Second Floor

