



1036 Terracotta Drive

\$1,062,641

BEDROOMS: 4

BATHS: 3 full, 1 half

SQFT: 2,687

COMMUNITY: The Settlement at Ashley Hall

FLOOR PLAN: Fishburne

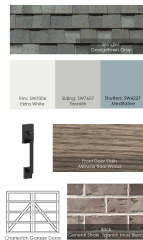
MLS: 24006645

Now is the perfect time to make your dream home a reality. We are offering a \$20,000 buyer incentive on this single-family home when you work with our preferred lender.

Take advantage of this limited time offer and enjoy the luxury, quality, and craftsmanship that Homes by Dickerson is known for. Terms and conditions apply. Contact us today to learn more!

Discover the allure of The Fishburne, a residence offering four bedrooms and three-and-a-half baths, providing both versatility and functionality. The owner's suite beckons with a tiled shower and a generously-sized walk-in closet, creating a retreat within your own home. Boasting remarkable craftsmanship, the open concept first floor is thoughtfully designed for entertaining.

Lot 35 - Fishburne H



05 0035 Design Board
24.03.15 Page 1

FLOOR PLANS



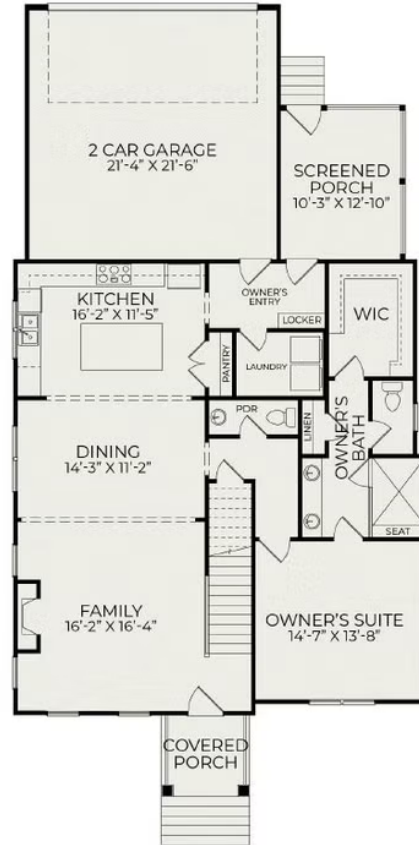
05 0035 Design Board
24.03.15 Page 2



Please Note...
All selections are subject to change based on availability. Please understand the actual colors of these selections may vary slightly from your monitor and these pictures. We cannot guarantee that the color you see accurately portrays the true color or texture of the product.
Thank you!

05 0035 Design Board
24.03.15 Page 3

First Floor



Second Floor

