



418 Mollie Meadow Drive

\$1,190,000

1 Elevations Available

BEDROOMS: 4

BATHS: 4 full, 1 half

SQFT: 3,751

COMMUNITY: Cattail

FLOOR PLAN: Brighton

For a limited time, we're offering an exclusive incentive on this home: Receive up to \$30,000 to use your way—whether it's toward a rate buydown, closing costs, design upgrades, or even a \$5,000 reduction in the purchase price. Experience the luxury, quality, and craftsmanship that Homes by Dickerson is known for. To qualify, buyer must use our preferred lender and attorney. Terms and conditions apply. Contact us today to learn more!

Introducing the Brighton plan at Cattail—an elegant lakeview home designed for both everyday comfort and effortless entertaining. A welcoming foyer opens to a private study and flows into the spacious family room and kitchen, where an oversized scullery and walk-in pantry add function and flexibility. Triple sliding doors connect the family room to a screened porch, offering uninterrupted views of the water and seamless indoor-outdoor living. The main-level primary suite features a freestanding tub and separate shower for a spa-like retreat. Upstairs, you'll find additional bedrooms, a generous rec room, and an open loft space—perfect for work, play, or relaxation. A three-car garage completes this thoughtfully designed home.



Exterior Rendering

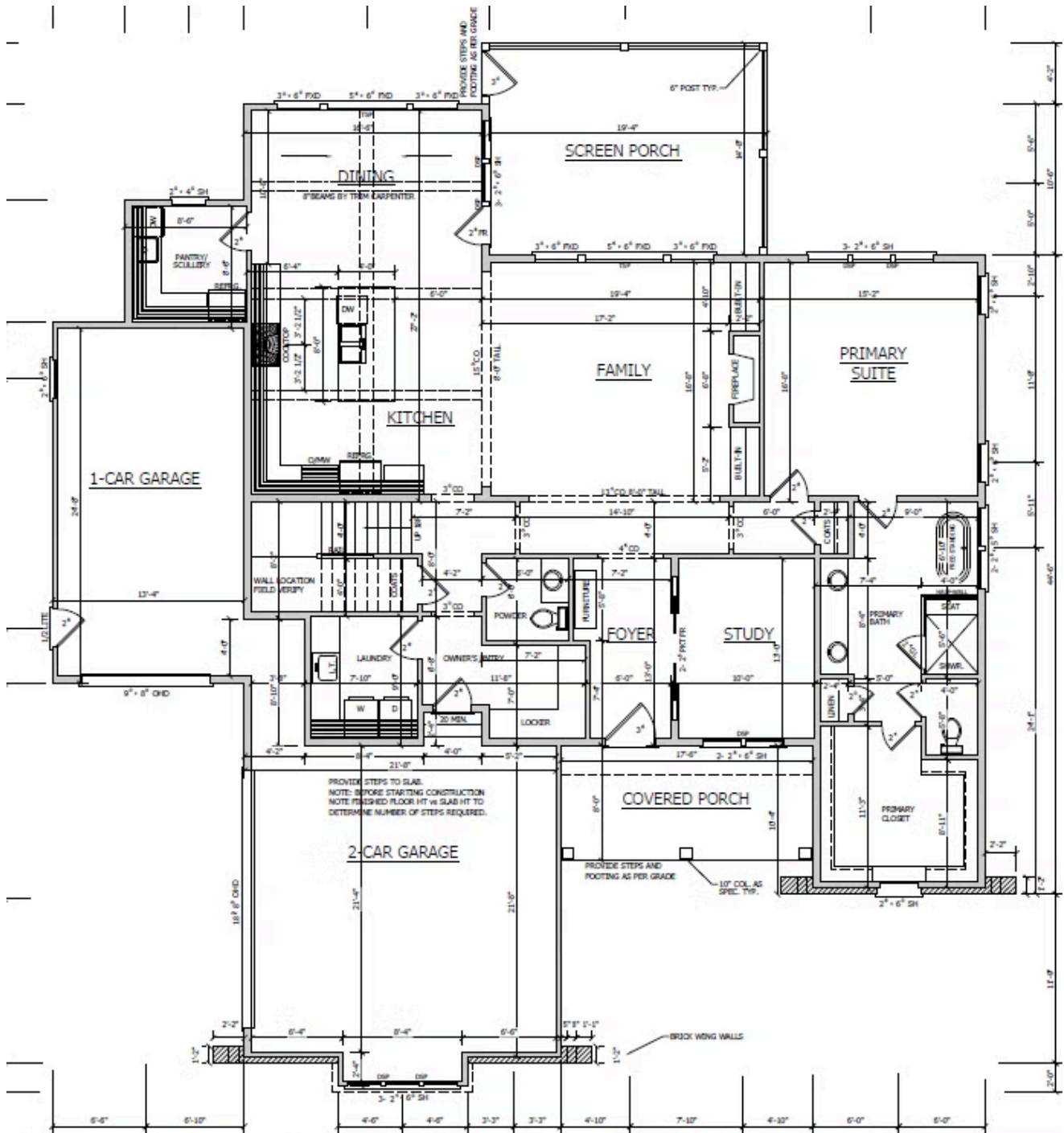


New Rendering Coming Soon



Completed Home Example

First Floor



Second Floor

