



205 Wash Hollow Drive

\$758,000

2 Elevations Available

BEDROOMS: 4

BATHS: 3 full

SQFT: 2,954

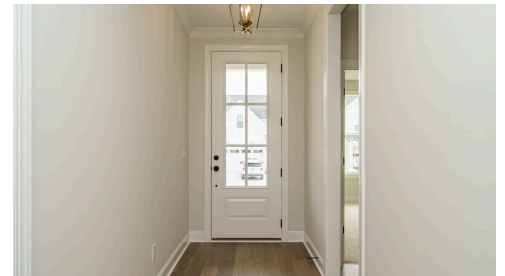
COMMUNITY: Wendell Falls

FLOOR PLAN: Seabrook

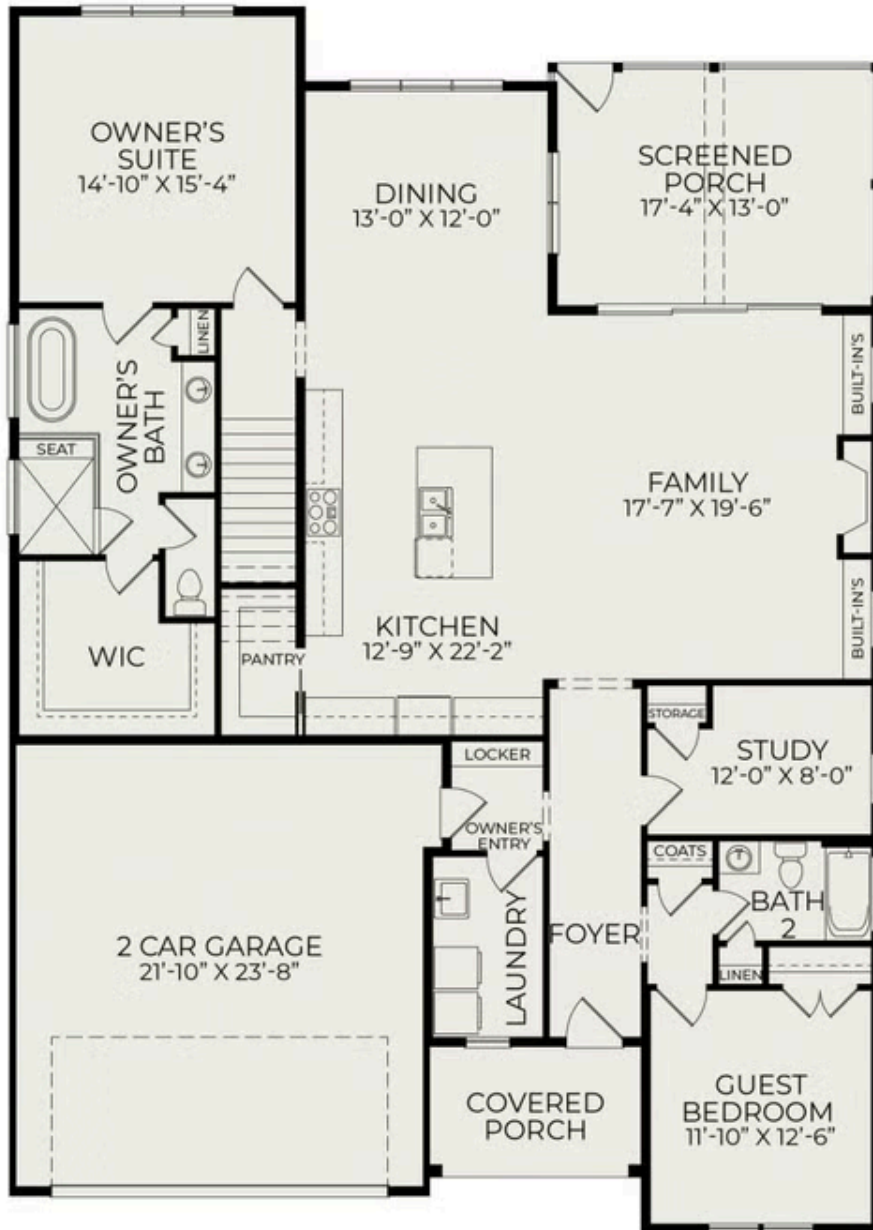
Now is the perfect time to make your dream home a reality. We are offering a \$30,000 buyer incentive on this single-family home when you work with our preferred lender. This offer includes a 3-2-1 rate buydown, making your new home even more affordable.

Take advantage of this limited time offer and enjoy the luxury, quality, and craftsmanship that Homes by Dickerson is known for. Terms and conditions apply. Contact us today to learn more!

Welcome to The Seabrook Plan featuring the charming English Cottage Elevation, designed with entertaining in mind. The large kitchen and main living area create an elegant and bright open space.



First Floor



Second Floor

