



205 Wash Hollow Drive

\$749,000

BEDROOMS: 4

BATHS: 3 full

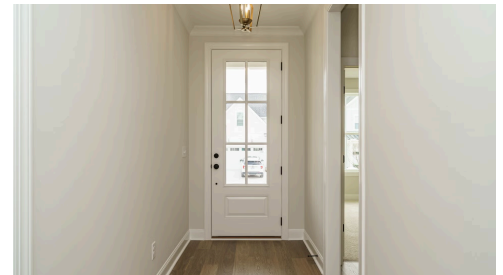
SQFT: 2,954

COMMUNITY: Wendell Falls

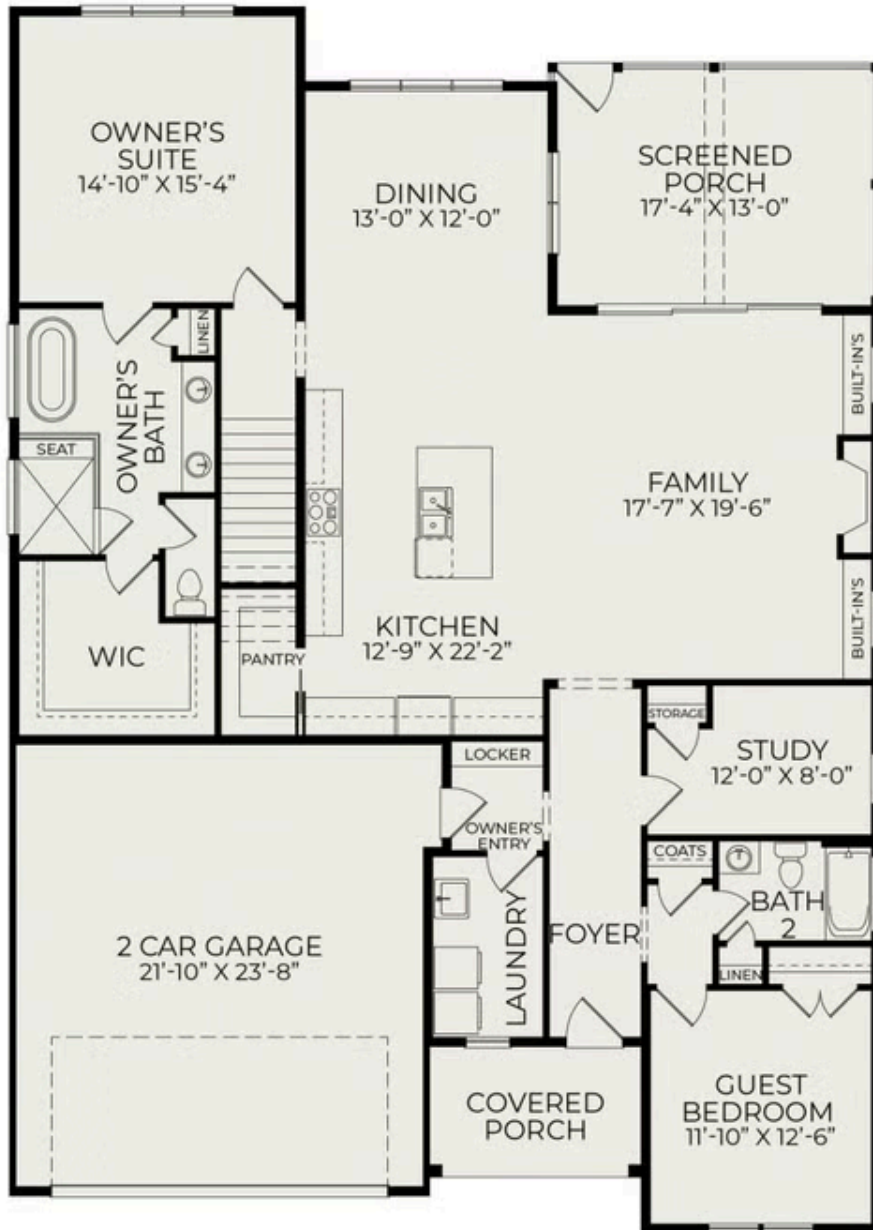
For a limited time, we're offering an exclusive incentive on this home: Choose a 3-2-1 mortgage rate buydown or receive up to \$30,000 to use your way—whether it's toward a rate buydown, closing costs, design upgrades, or even a \$5,000 reduction in the purchase price.

Experience the luxury, quality, and craftsmanship that Homes by Dickerson is known for. To qualify, home must close by June 30, 2025, and buyer must use our preferred lender and attorney. Terms and conditions apply. Contact us today to learn more!

Welcome to The Seabrook Plan featuring the charming English Cottage Elevation, designed with entertaining in mind. The large kitchen and main living area create an elegant and bright open space, perfect for gatherings with family and friends. Expansive 12-foot sliders seamlessly connect the indoors to an oversized covered screen porch (17' x 13'), where you can enjoy your morning coffee or unwind in the evening. The owner's suite is conveniently located on the main level and boasts a spa-like ensuite bathroom, complete with a stunning stand-alone soaking tub, a spacious walk-in shower, and a double



First Floor



Second Floor

