



## 1804 Bright Lantern Way

**\$617,000**

**BEDROOMS:** 3

**BATHS:** 2 full, 1 half

**SQFT:** 2,607

**COMMUNITY:** Wendell Falls

Now is the perfect time to make your dream home a reality. We are offering a \$20,000 buyer incentive on this single-family home when you work with our preferred lender. This offer includes a 3-2-1 rate buydown, making your new home even more affordable.

Take advantage of this limited time offer and enjoy the luxury, quality, and craftsmanship that Homes By Dickerson is known for. Terms and conditions apply. Contact us today to learn more!



Exterior Rendering



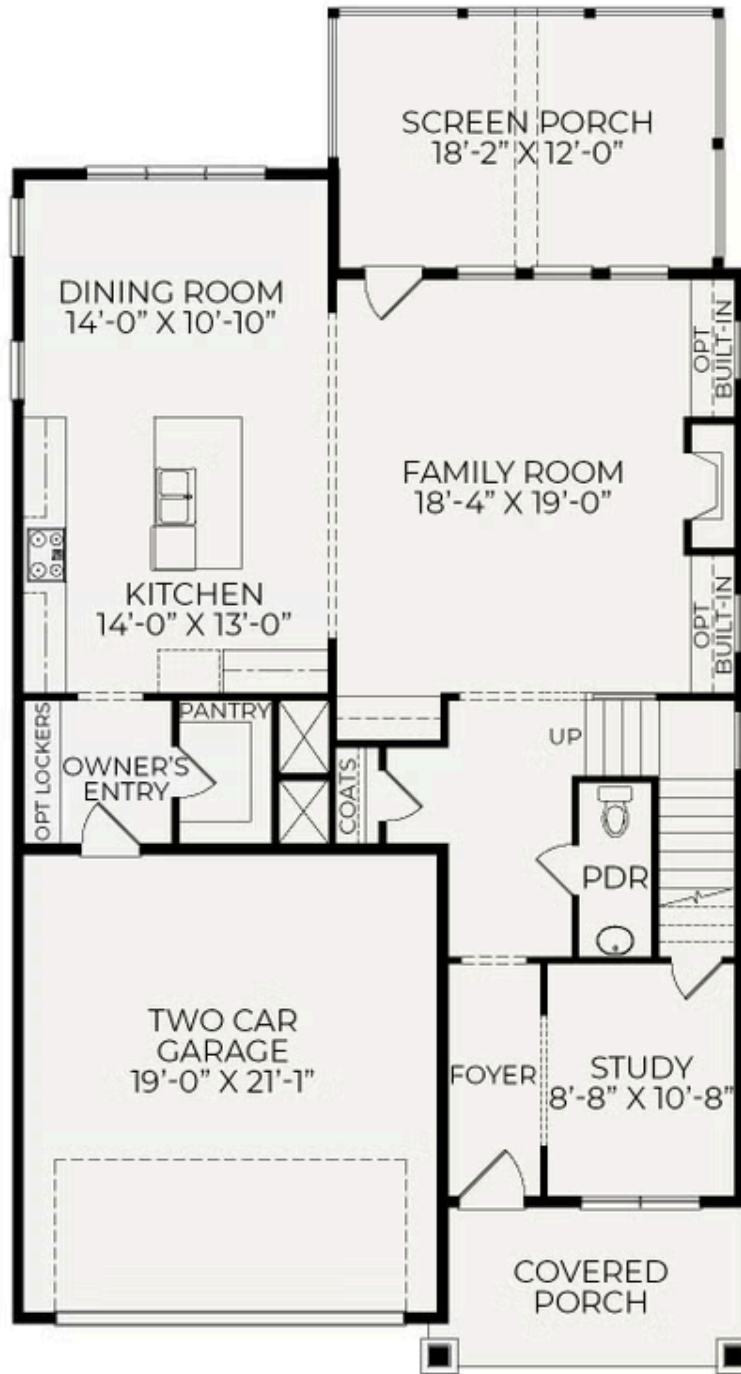
Wendell Falls Community  
Photos



Wendell Falls Community  
Photos



## First Floor



Second Floor

