



201 Wash Hollow Drive

\$759,000

2 Elevations Available

BEDROOMS: 4

BATHS: 3 full

SQFT: 3,008

COMMUNITY: Wendell Falls

FLOOR PLAN: Mayfair

Now is the perfect time to make your dream home a reality. We are offering a \$30,000 buyer incentive on this single-family home when you work with our preferred lender. This offer includes a 3-2-1 rate buydown, making your new home even more affordable.

Take advantage of this limited time offer and enjoy the luxury, quality, and craftsmanship that Homes by Dickerson is known for. Terms and conditions apply. Contact us today to learn more!

Ask about our incentive on this Mayfair Plan, built by locally owned and operated, award winning custom builder. Homes By Dickerson. We are proud to be voted the #1 Green Builder in the US.



Example of Similar Completed Home

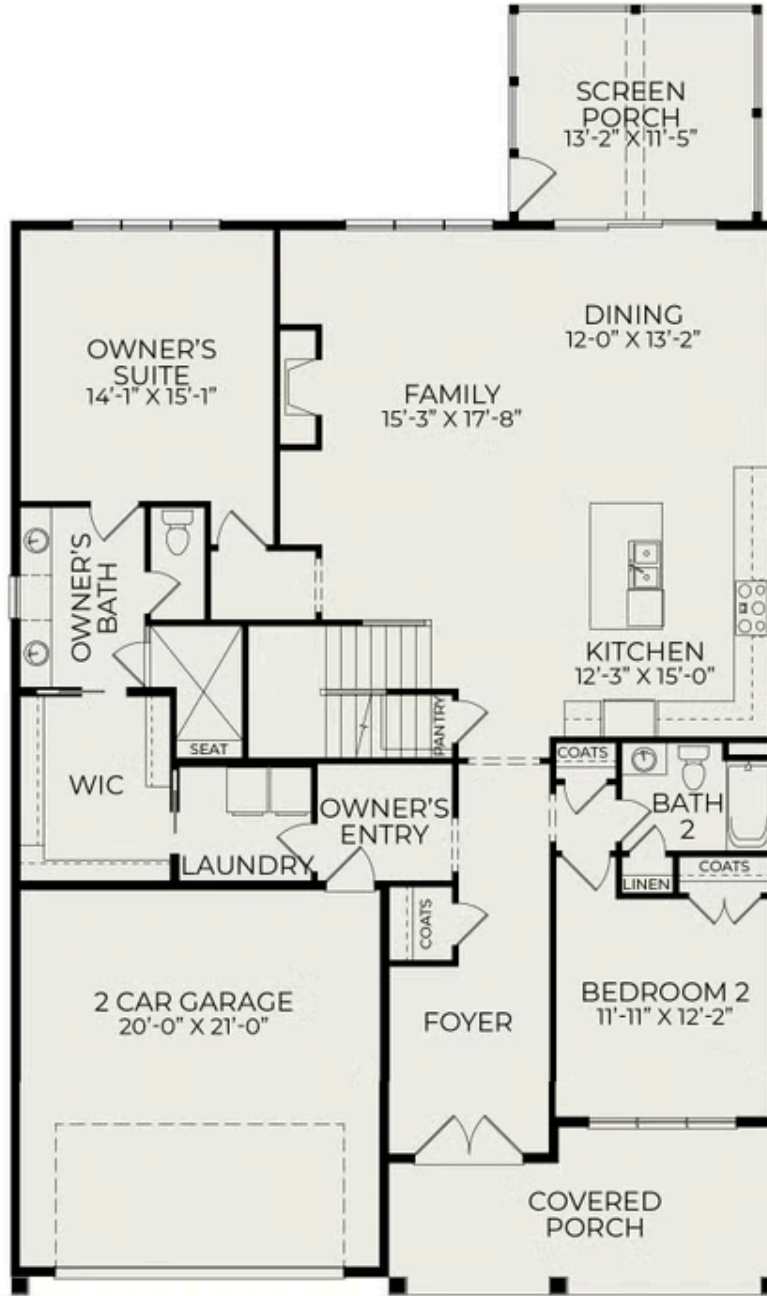


back view



Mayfair Front Elevation

First Floor



Second Floor

