



229 Wash Hollow Drive

\$739,000

5 Elevations Available

BEDROOMS: 4

BATHS: 3 full

SQFT: 2,944

COMMUNITY: Wendell Falls

FLOOR PLAN: Concord

MLS: 10007449

Now is the perfect time to make your dream home a reality. We are offering a \$30,000 buyer incentive on this single-family home when you work with our preferred lender. This offer includes a 3-2-1 rate buydown, making your new home even more affordable.

Take advantage of this limited time offer and enjoy the luxury, quality, and craftsmanship that Homes by Dickerson is known for. Terms and conditions apply. Contact us today to learn more!



002 Exterior

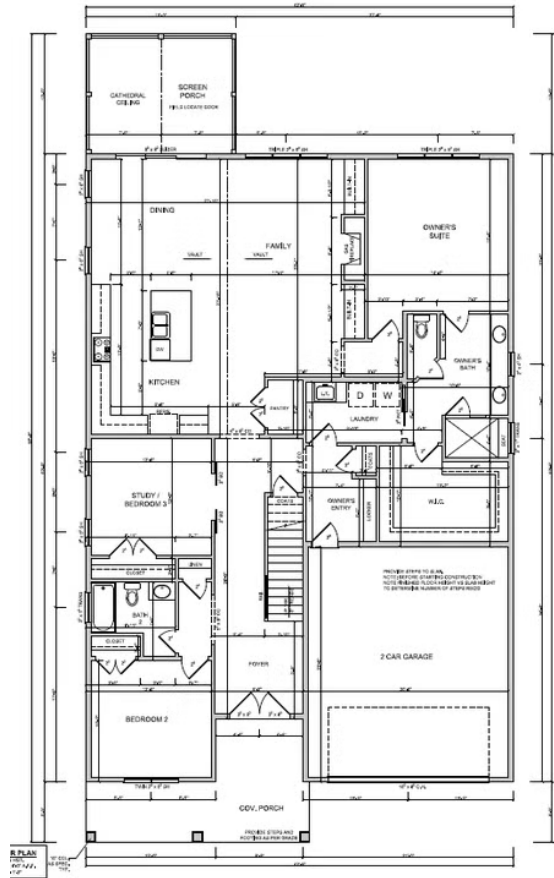


003 Front Porch



004 Front Door

First Floor



Second Floor

