



## 327 Braden Road

**\$585,000**

**1 Elevations Available**

**BEDROOMS: 3**

**BATHS: 3 full**

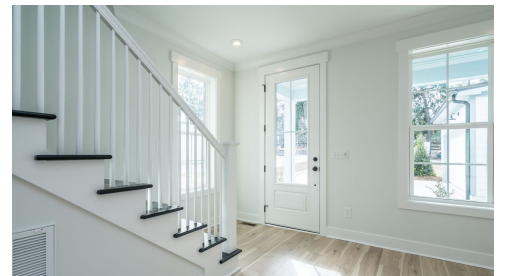
**SQFT: 2,130**

**COMMUNITY: Braden Place**

**FLOOR PLAN: Clark Custom**

Nestled at the edge of downtown and the tranquility of horse country, Braden Place at Edgemoore Heights offers the perfect blend of urban convenience and serene country living. With Homes by Dickerson's renowned white glove service, you can look forward to a stress-free and enjoyable building experience, guided by their team of experts every step of the way.

The Clark Floor Plan is a stunning 4-bedroom, 3-bathroom home designed for comfortable living. Spanning 2,130 square feet, this residence provides ample space for you to spread out and personalize. The primary bedroom, located upstairs alongside two guest bedrooms, offers



First Floor



## Second Floor

