



331 Braden Road

\$585,000

BEDROOMS: 4

BATHS: 3 full, 1 half

SQFT: 2,192

COMMUNITY: Braden Place

FLOOR PLAN: Ashe Custom

MLS: 100424268

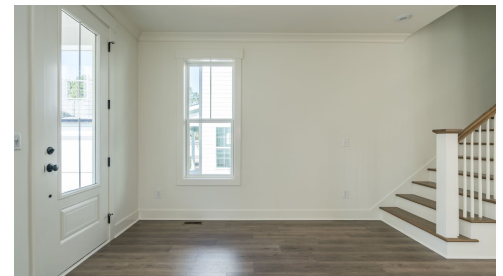
Located at the cusp of downtown and horse country, Braden Place at Edgemore Heights offers the perfect balance between all that downtown offers and slower country living. With Homes by Dickerson's longstanding reputation for energy efficient, high-quality builds, we introduce: The Ashe floor plan! This spacious and timeless home boasts 2,192 square feet, with 4 bedrooms and 3.5 baths. The open floor plan and large kitchen, with a pantry, and a half bathroom make it perfect for entertaining guests or simply enjoying life comfortably. The highlight of this home is the flexibility of the space. The primary bedroom is located upstairs, complete with a walk-in closet and en suite bathroom. There are another 2 guest bedrooms upstairs, that share a jack and jill bathroom. Downstairs you will find another generously sized guest bedroom on the second floor, complete with an ensuite bathroom! In addition to the beautiful interior, the Ashe Floor plan also includes 2 porches and a detached two-car garage. Brushed Concrete Driveway, walkways, and



002 Covered Front Porch



003 Covered Front Porch



004 Entry Foyer

First Floor



Second Floor

