



6040 Scalybark Road

**\$735,000**

**1 Elevations Available**

**BEDROOMS: 3**

**BATHS: 2 full, 1 half**

**SQFT: 2,468**

**COMMUNITY: The View**

**FLOOR PLAN: Hillandale  
American Farmhouse**

For a limited time, we're offering an exclusive incentive on this home: Choose a 2-1 mortgage rate buydown or receive up to \$30,000 to use your way—whether it's toward a rate buydown, closing costs, design upgrades, or even a \$5,000 reduction in the purchase price.

Experience the luxury, quality, and craftsmanship that Homes by Dickerson is known for. To qualify, buyer must use our preferred lender and attorney. Terms and conditions apply. Contact us today to learn more!

Welcome to this beautifully crafted new construction home, offering 2,468 square feet of living space and exceptional custom finishes throughout. Nestled on a spacious .32-acre lot, this home is designed for both comfort and style, with thoughtful upgrades and attention to detail in every corner. The main floor features a spacious owner's suite, providing a private retreat with plenty of natural light and a tranquil atmosphere. The open and inviting floor plan includes a formal dining room, perfect for entertaining, and a cozy family room with a fireplace and built-in cabinetry, offering a warm and welcoming space for family gatherings. A convenient powder room is also located on the main level, as well as a serene, screened porch - an ideal spot to relax and enjoy the outdoors in comfort. Upstairs, you'll find two generously sized bedrooms, a full



Construction Update: April  
2025

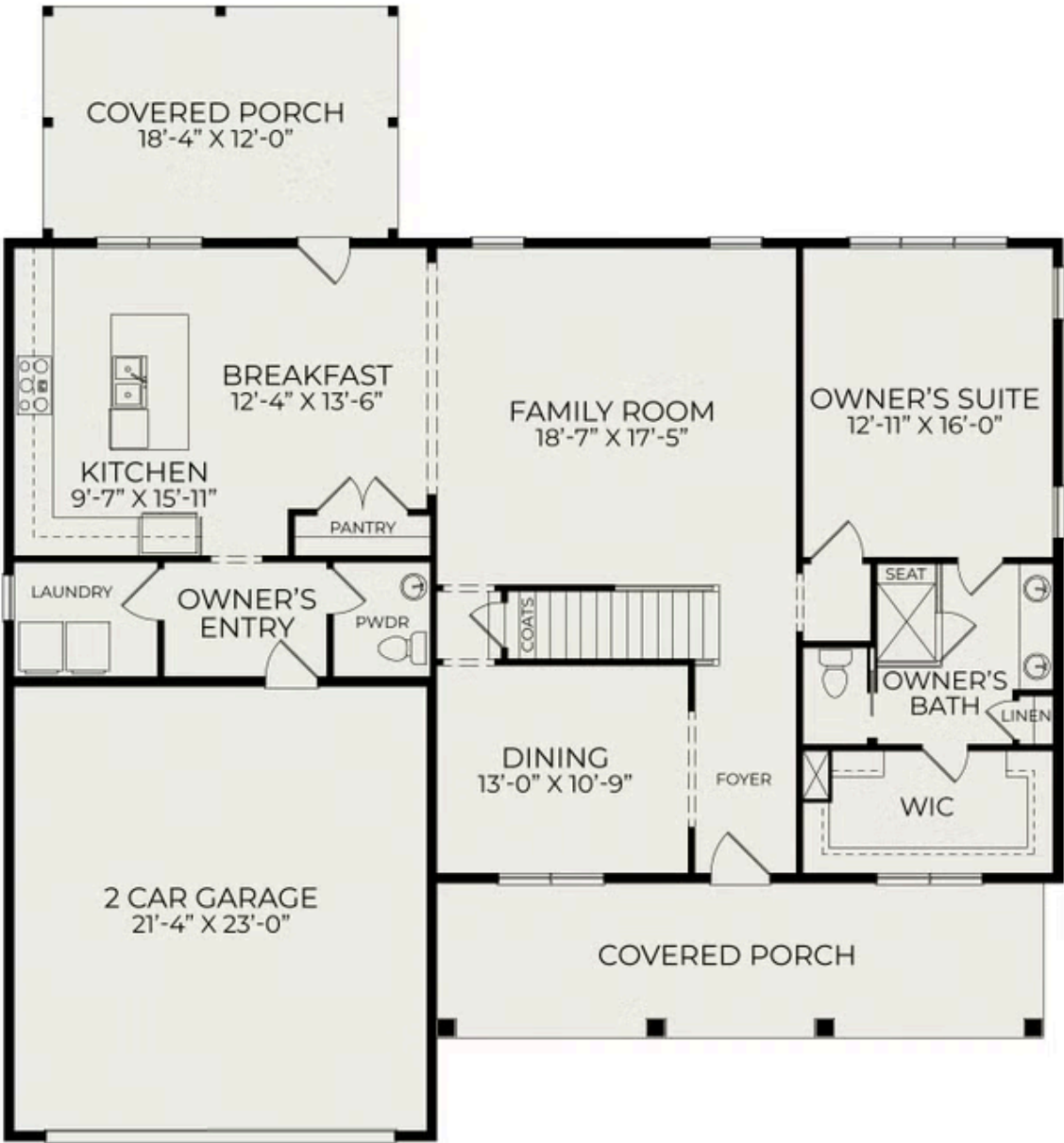


Construction Update: April  
2025



Construction Update: April  
2025

First Floor



Second Floor

