



1003 Coldspring Circle

**\$999,000**

**2 Elevations Available**

**BEDROOMS:** 3

**BATHS:** 2 full, 1 half

**SQFT:** 3,092

**COMMUNITY:** Bronze Leaf at  
Croasdaile Farm

**FLOOR PLAN:** Townhome B  
Interior

**Lock in a 30-Year Fixed Rate at 1% Below Today's Average! With the use of our preferred lender and attorney, you can secure financing at a rate one percent lower than the daily average. No hassle. No gimmicks. Just a straightforward opportunity designed to give you peace of mind, confidence, and long-term security as you take the next step toward your new home.**

Spanning two stories, this townhome embodies contemporary living with an open-concept design that seamlessly connects the family room, kitchen, and dining area. The spacious sunroom off the back of the home invites natural light and offers a delightful extension of the living space. The first floor is dedicated to comfort and luxury, featuring the owner's suite with a spacious walk-in closet, double vanities, and a standing fully tiled shower. Additional highlights on the first floor include a formal dining room, a laundry room, mudroom, and a powder room, ensuring both practicality and style. The second floor unveils a versatile rec room, a powder room for added convenience, two additional bedrooms, and a shared full bathroom. Ample storage is provided with a walk-in attic, and the townhome is complemented by an attached two-car garage. This home gives you the opportunity to collaborate with our designer and personalize the interior to fit your style. Contact us today to learn more about our design center and how to



Construction Update:  
November 2025

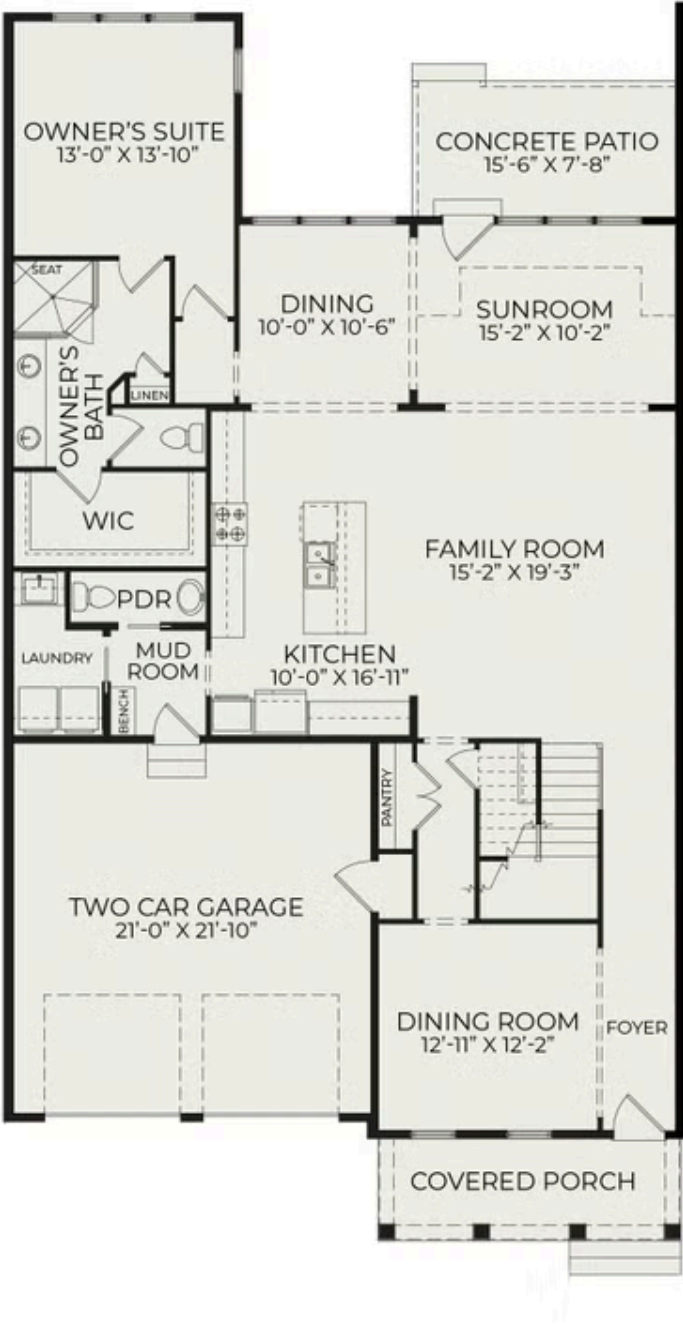


Construction Update:  
November 2025



Construction Update:  
November 2025

First Floor



Second Floor

